

# 11

Beams,  
Shelves and  
Surrounds  
for Stoves

*Including*

**FocusCast**

Non-combustible  
Beams and  
Surrounds

## About us...

For over 35 years Focus Fireplaces has been a company driven by a passion for designing and creating products for the fireplace industry. All of our products are manufactured using the finest, responsibly sourced timbers and materials in a purpose-built factory in York.

As each timber item is individually made to order, we have the capability to alter or adapt our designs to suit your specific requirements; therefore offering a fully made-to-measure service.

Fast turnaround and delivery are key elements in our commitment to providing market-leading customer service. We have a policy of only selling our fireplace products through appointed retailers and trades people to ensure that customers receive the best possible service and technical assistance.

*Cover image: FocusCast Deep Beam in a Character Pale Oak Finish illustrated with the Gazco Chesterfield 5 Gas Stove.*



## FocusCast Non-combustible Beams and Surrounds

**YOU WON'T BELIEVE  
IT'S NOT WOOD!**

FocusCast non-combustible beams and surrounds are cast from a fire-resistant material and emulate genuine timber and stone beams for an authentic appearance.

They are designed for use when regulations state that the distance from a stove would be too close to use a timber beam.

***"Unbelievably realistic..."***



Pages 4 – 11

## Solid Oak Beams and Shelves



**The choice is immense.**

Solid Oak beams and shelves are available in several different width profiles and can be supplied at almost any length.

You can select your preferred level of ageing and choose from a wide selection of colour finishes and added detail.

Pages 12 – 17



## Shelves



Whether it's a floating shelf above your Stove, display shelves for books and family treasures, or something a little more traditional with corbels - the wide choice of timbers and finishes will ensure you can create your ideal ambience.

We can make shelves exactly to the sizes you want!

Pages 18 – 19

## Solid Oak and Painted Stove Surrounds

An attractive selection of oak surrounds that are either made up from three solid timber beams, or supplied as one-piece surrounds.

As with the Oak Beams, they can be produced in a wide variety of textures and finishes.

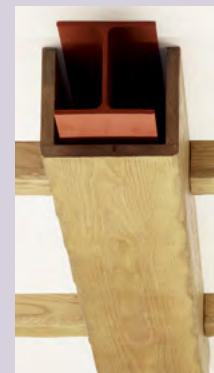


Pages 20 – 24

## Beam Covers

Looking to cover a steel beam?

Our beam covers create a superb ambience that will enhance your interior decor.

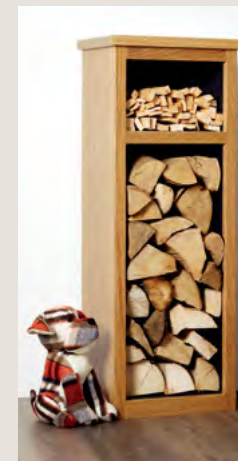


Page 25

## Furniture

What could be more ideal than choosing some useful occasional furniture to match or complement your fireplace or beam.

Choose from TV units, tables, bookcases and log stores.



Page 26



# FocusCast Non-combustible Surrounds and Beams

FocusCast beams and surrounds are moulded from timber and stone beams using a high-density mineral composite. Hand-painted by our team of experts, they are so realistic that it's almost impossible to tell them apart from real timber or stone. Their fire-resistant qualities allow them to be positioned closer to a stove than a timber beam\*.

FocusCast beams and surrounds come in **six** distinct designs and textures, as well as various lengths to suit **most** stove installations:

## Character Beams & Stove Surrounds

With distressed edges and textured surface displaying the cracks, deep grain and knots of a characterful oak beam.

## Smooth Beams & Stove Surround

Smooth straight edges and fine grain marks provide a modern aesthetic to this range of beams and surrounds.

## Stone-effect Fascia Beams

Moulded from a lightly textured stone slab, these stylish cast fascia beams are a real design statement.

## Tudor Beams

With strong features, the Tudor beams are cast to faithfully reproduce the character of an old timber beam.

## Vintage Beams **NEW**

Moulded from an authentic beam with real heritage, the FocusCast Vintage beams are highly realistic and come in two distinctive hand-painted finishes.

## York Beams & Jorvik Stove Surround **NEW**

An historic rafter has been utilised to craft an amazing large fascia beam and surround with incredibly detailed and characterful features.



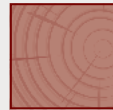


# FocusCast Character Beams

FocusCast Deep Beam in a Character Mid Oak Finish



FocusCast Deep Beam in a Character Weathered Oak Finish



**Deep Beam**  
5½ x 5½"

**AVAILABLE:**  
54" 51" 48" 42" 36"



**Standard Fascia Beam**  
5½ x 2¾"

**AVAILABLE:**  
54" 48" 42"



You can add downlights to all FocusCast DEEP BEAMS from 48" upwards and the GREAT BEAM

FocusCast Deep Beam in a Character Weathered Finish



FocusCast Deep Beam in a Character Mid Oak Finish



FocusCast Deep Beam in a Character Pale Oak Finish



FocusCast Deep Beam in a Character Dark Oak Finish



FocusCast Great Beam in a Character Mid Oak Finish



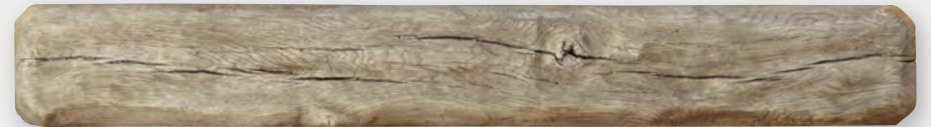
**Great Beam**  
7½ x 5½"

**AVAILABLE:**  
54" ONLY



You can add downlights to the FocusCast GREAT BEAM

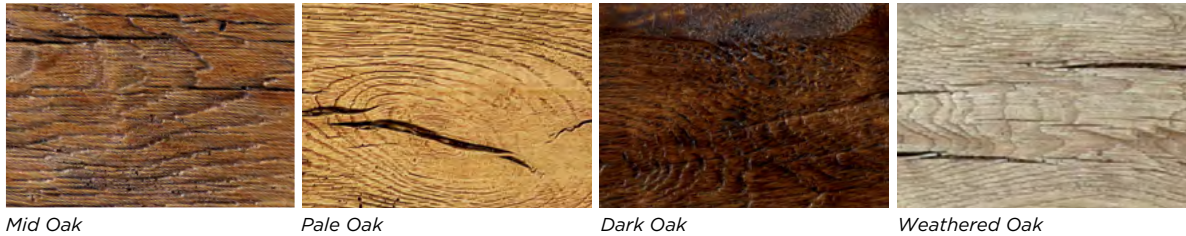
FocusCast Great Beam in a Character Weathered Finish



**\*Minimum clearances for non-combustible surrounds and beams: 250mm above the stove on a 5kw stove and 350mm on a 7kw stove.**



# FocusCast Character Stove Surrounds



*FocusCast Grantham in a Character Weathered Finish*



*FocusCast Beamish in a Character Pale Oak Finish*



The Grantham and Beamish surrounds are supplied in 3 pieces allowing the legs to be positioned to match the fireplace opening.

# FocusCast Smooth Beams

The smooth beams and Barlby surround maintain the beautiful appearance of solid timber but in a simpler, more modern style.

FocusCast Deep Beam in a Smooth Weathered Finish



FocusCast Deep Beam in a Smooth Weathered Finish



FocusCast Deep Beam in a Smooth Dark Oak Finish



FocusCast Deep Beam in a Smooth Mid Oak Finish

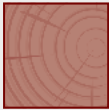


FocusCast Deep Beam in a Smooth Pale Oak Finish



FocusCast Standard Fascia Beam in a Smooth Weathered Finish

Deep  
Beam  
5½ x 5½"



**AVAILABLE:**  
54" 51" 48" 42"

Standard  
Fascia  
Beam  
5½ x 2¾"



**AVAILABLE:**  
48" ONLY



\*Minimum clearances for non-combustible surrounds and beams: 250mm above the stove on a 5kw stove and 350mm on a 7kw stove.



# FocusCast Smooth Stove Surrounds

*The smooth beams and Barlby surround maintain the beautiful appearance of solid timber but in a simpler, more modern style.*



Mid Oak



Pale Oak

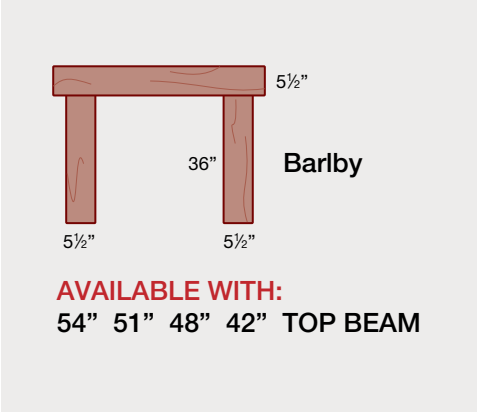


Dark Oak



Weathered Oak

FocusCast Barlby in a Smooth Pale Oak Finish



*\*Minimum clearances for non-combustible surrounds and beams: 250mm above the stove on a 5kw stove and 350mm on a 7kw stove.*



# FocusCast Stone-effect Fascia Beams



FocusCast Large Fascia Beam in a Portlandstone Finish

Moulded from a genuine Stone Beam, the FocusCast Stone-effect Fascia Beams are easy to handle and fit. Available in three realistic stone-effects.

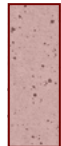


FocusCast Large Fascia Beam in a Limestone Finish



FocusCast Large Fascia Beam in a Cotswoldstone Finish

**Large Fascia Beam**  
7 x 3"



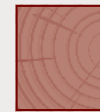
**AVAILABLE:**  
48" and 54"

# FocusCast Tudor Range

Two non-combustible beams that faithfully reproduce all the character of an old piece of timber.



FocusCast Tudor Deep Beam in a Dark Oak Finish



**Deep Beam**  
5½ x 4½"

**AVAILABLE:**  
48" ONLY



**Large Fascia Beam**  
7½ x 2¾"

**AVAILABLE:**  
51" ONLY



FocusCast Tudor Deep Beam in a Pale Oak Finish

FocusCast Tudor Large Fascia Beam in a Weathered Finish





# FocusCast Vintage Beams **NEW**

FocusCast Vintage Beam in a Honey Oak Finish



The stunningly realistic beams on these pages have been expertly moulded from original heritage beams of up to 600 years old. The detail is exquisite and they are available in two distinctive hand-painted finishes.

FocusCast Vintage Beam in a Burnt Oak Finish - 48"



FocusCast Vintage Beam in a Honey Oak Finish - 48"



FocusCast Vintage Beam in a Honey Oak Finish - 54"



**Vintage  
Beam**

5 x 4½ max

**AVAILABLE:**

**54" 48"**





# FocusCast York Large Fascia Beams and FocusCast Jorvik Surround NEW



FocusCast Jorvik Surround in a Honey Oak Finish

FocusCast York Beam in a Burnt Oak Finish - 48"



FocusCast York Beam in a Honey Oak Finish - 54"



**York Large Fascia Beam**  
7½ x 4" max



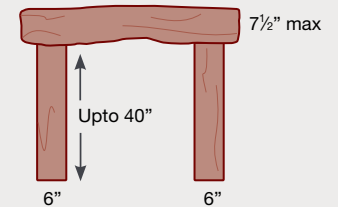
**AVAILABLE:**  
54" 48"



FocusCast York Beam in a Burnt Oak Finish



**Jorvik Surround**



**AVAILABLE WITH:**  
54" 48" TOP BEAM

The length of the Jorvik legs can be specified at the time of order (upto 40" max).



# Solid Oak Beams and Shelves



Whether your room decor demands a beam in smooth contemporary light oak or one that has the mellow character of an old beam – the choice is extensive.

Follow this 6 stage process to select the genuine timber beam or shelf to suit your requirements.

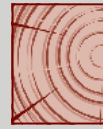
*There are Regulations that specify the minimum distance that a beam/shelf must be above the stove. These measurements vary depending on the type and heat output of the selected stove. Please refer to your stockist/installer for further information.*

## 1 Select the PROFILE of Beam or Shelf that you require

*Not available in Prime Timber*

Great Beam

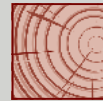
7½ x 5½"



*Not available in Prime Timber*

Deep Beam

5½ x 5½"



Large Fascia Beam

7½ x 2¾"



Standard Fascia Beam

5½ x 2¾"



Mini Fascia Beam

3¾ x 2¾"



Fascia Panel

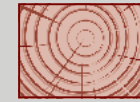
7 x 1¼"



*Not available in Prime Timber*

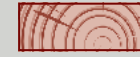
Great Shelf

5½ x 7½"



Large Shelf

2¾ x 7½"



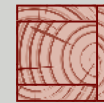
Standard Shelf

2¾ x 5½"



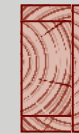
Hollow Deep Beam

5½ x 5½"



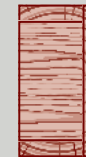
Hollow Beam

7 x 4"



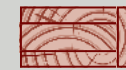
Large Hollow Beam

9 x 7"



Hollow Shelf

4 x 7"



## 2

Choose the LENGTH you would like – 42", 48" and 54" are standard sizes, but Beams and Shelves can be supplied at **any** length upto 3m



## +

CORBELS can be added to your Beam or Shelf...





### 3 Make your choice of SURFACE TEXTURE and AGEING

#### Round Edge

Round edges  
Smooth surface



#### Rustic

Nibbled edges  
Smooth surface



#### Dressed

Heavily contoured  
Smooth surface



#### Aged

Distressed edges  
Textured surface



#### Extremely Aged

Distressed edges and faces  
Textured surface



#### Ancient

Looks very old



*Note: All beams (except Prime) feature knots, splits and shakes.*

#### Prime

Prime timber is an option on all products except Great Beams, Great Shelves and Deep Beams. It is normally supplied with round edges.



### 4 Choose your COLOUR



Natural Waxed Oak



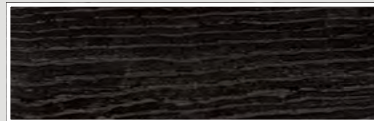
Light/Medium Oak



Medium Oak



Medium/Dark Oak



Ebony on Oak



Silvered Oak



Warm Antique

### 5 You can CUSTOMISE your Beam

#### Arched

Slow arches are available on Standard Fascia Beams, Large Fascia Beams and Fascia Panels



#### Pegs



Pegs or Indents add character to any beam

#### Indents



Downlights can be added to the Hollow Beam, Hollow Deep Beam, Large Hollow Beam and Hollow Shelf

### 6 FIXING SYSTEMS for Deep Beams and Shelves



#### Focus Easy-fix Brackets - 950mm

Nothing can be easier than an Easy-fix!!

The Focus Easy-fix system is a substantial bracket designed to simplify the fitting of the heavier beams and shelves. It comes supplied with plugs and screws.

Once the beam is in place, it is easily secured from underneath with a few turns of an Allen Key.

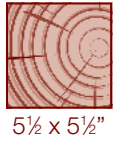


If the Easy-fix system is not specified: we supply three M10 x 300mm threaded metal bars that screw into pre-drilled holes in the back of the beam.

Consult with your Installer for more information.



# Solid Oak Deep Beam



Deep Beams are cut from the heart of the oak log and therefore reveal lots of character including knots, splits and shakes. Every beam is unique. Skilful workmanship further enhances the beam with progressive levels of ageing (Round Edge, Rustic, Dressed, Aged, Extremely Aged or even Ancient). Each beam is then beautifully finished with your choice of colour.

**Deep Beams are not available in Prime Timber.**

*Deep Beam with Corbels: Rustic Oak in a Light/Medium Finish*



*Deep Beam: Aged Oak in a Medium Finish*



*Deep Beam: Ancient Oak in a Light/Medium Finish*



*Deep Beam  
Extremely Aged Oak in a Light/Medium Finish with Sculpting*



*Deep Beam  
Ancient Oak in a Light/Medium Finish*



*Deep Beam  
Ancient Oak in a Medium/Dark Finish*

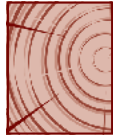


*Deep Beam  
Dressed Oak in a Natural Waxed Finish*

**Selected examples - see pages 12-13 for further colours and finishes.**



# Solid Oak Great Beam



7½ x 5½"

*Great Beams are cut from the heart of the oak log and therefore reveal lots of character including knots, splits and shakes. Every beam is unique. Skilful workmanship further enhances the beam with progressive levels of ageing (Round Edge, Rustic, Dressed, Aged, Extremely Aged or even Ancient). Each beam is then beautifully finished with your choice of colour.*

***Great Beams are not available in Prime Timber.***



*Great Beam  
Aged Oak in a Medium Finish*



*Great Beam  
Aged Oak in a Medium/Dark Finish*



*Great Beam  
Rustic Oak in a Light/Medium Finish*



*Great Beam: Aged Oak in a Medium Finish*

***Selected examples - see pages 12-13 for further colours and finishes.***





# Large Fascia Beam

7½ x 2¾"

Both Large and Standard Fascia Beams can be made in all our different options. These include Prime, Round Edge, Rustic, Dressed, Aged, Extremely Aged and Ancient Oak. All these Beams are produced using Kiln-dried timber which is subject to far less movement.

# Standard Fascia Beam



5½ x 2¾"



Large Fascia Beam  
Prime Oak in a Natural Waxed Finish



Large Fascia Beam  
Rustic Oak in Light/Medium Finish with Arch



Large Fascia Beam  
Dressed Oak in a Medium Finish



Large Fascia Beam  
Aged Oak in a Natural Waxed Finish with Indents



Large Fascia Beam  
Aged Oak in Warm Antique Finish



Large Fascia Beam  
Ancient Oak in a Light/Medium Finish



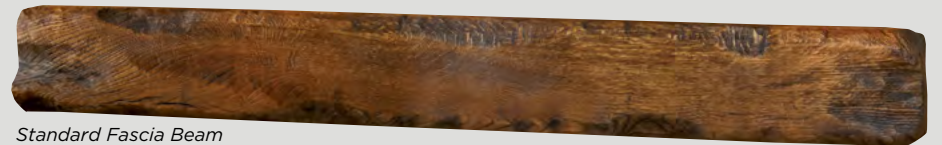
Standard Fascia Beam  
Rustic Oak in a Silvered Finish



Standard Fascia Beam  
Aged Oak in a Light/Medium Finish with Pegs



Standard Fascia Beam  
Extremely Aged Oak in a Medium/Dark Finish



Standard Fascia Beam  
Extremely Aged Oak in Warm Antique Finish



Standard Fascia Beam with Corbels  
Rustic Oak in a Medium Finish

Mini Fascia Beams, Fascia Panels and Floating Shelves can be made in all our different options. These include Prime, Round Edge, Rustic, Dressed, Aged, Extremely Aged and Ancient Oak. All these Beams are produced using Kiln-dried timber which is subject to less movement.



3 3/4 x 2 3/4"

## Mini Fascia Beam



Mini Fascia Beam  
Rustic Oak in a Medium Finish



Mini Fascia Beam  
Aged Oak in a Medium/Dark Finish

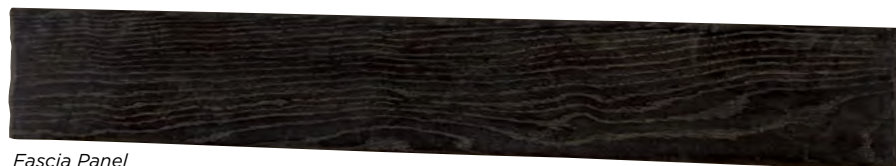


7 x 1 1/4"

## Fascia Panel



Fascia Panel  
Prime Oak in a Light/Medium Finish



Fascia Panel  
Rustic Oak in an Ebony Finish

### FIXING SYSTEMS for Fascia Beams and Panels



Fascia Beams and Fascia Panels are supplied with two metal plate keyholes inserted in the back. These come complete with plugs and screws.



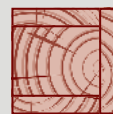
Alternatively there is an 850mm Easy-fix system designed for Fascia Beams. (We recommend discussing fixings with your installer).



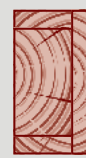
Hollow Deep Beam: Prime Oak in a Natural Waxed Finish with Lights



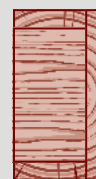
**Downlights can be installed in all Hollow Beams that are 48" or longer**



5 1/2 x 5 1/2"



7 x 4"



9 x 7"

## Hollow Beam

Hollow Beams are fabricated to give the appearance of a Solid Beam. Their lighter construction is ideal where weight is an issue. They can be made to any size up to 3m. Hollow Beams are not available as Dressed, Extremely Aged or Ancient Oak.



Hollow Deep Beam  
Prime Oak in a Natural Waxed Finish



Hollow Beam  
Aged Oak in a Light/Medium Finish



Large Hollow Beam  
Prime Oak in a Natural Waxed Finish



# Great, Large, Standard and Hollow Shelves



Standard Shelf  
Prime Oak in a Natural Waxed Finish



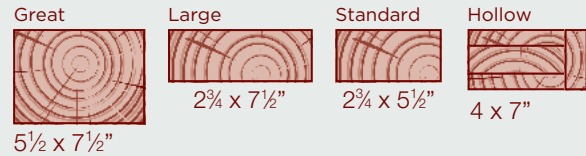
Standard Shelf  
Rustic Oak in a Medium Finish



Standard Shelf  
Aged Oak in a Light/Medium Finish



Standard Shelf  
Extremely Aged Oak in a Medium/Dark Finish



All of the Shelves above can be combined with a set of Corbels.

Standard Shelf: Rustic Oak in a Medium Finish



These attractive shelves will enhance any stove installation and can be ordered in a wide variety of timbers and finishes. As every one is hand-made, they can be manufactured to your specific size.

## Shelves complete with Corbels



Corby Shelf: Antique White with Prime Oak Mantel in a Natural Waxed Finish



Plain Corbel Shelf: Standard Waxed Pine

Standard Shelf with Corbels: Rustic Oak in a Medium Finish



# Contemporary Shelves

A floating shelf above your stove can be an attractive alternative to a timber beam and create a more contemporary appearance.

This could be a design like the Canterbury or Mallaig Shelf in Solid Oak or one of the others shown here that are fabricated using high-quality veneers or painted MDF.



*Canterbury Shelf: Waxed Oak*

*Mallaig Shelf: Light/Medium Oak*



*Standard Shelves in a Walnut Finish*

*Standard Shelf in a White Finish*





# Solid Oak Stove Surrounds

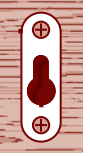
## Beamish

*Beamish: Aged Oak in a Medium Finish  
Beamish Mirror: Aged Oak in a Medium Finish*



*The dimensions of the Barlby and Beamish are almost the same, however the Barlby has shallower legs which gives slightly more overhang on the mantel.*

*The Beamish and Barlby are supplied in three pieces. Metal keyhole plates are inserted in the backs of the legs and mantel.*



	METRIC	IMPERIAL
Mantel	1295	51
Mantel Depth	140	5½
Surround Height	1054	41½
Opening Height	915	36
Opening Width	915	36
Width at Base	1193	47
Rebate	0	0

SIZES (MM)	WIDTH	HEIGHT
Beamish Mirror	1168	730

## Barlby

*Barlby: Rustic Oak in a Light/Medium Finish*





## Gatsby

The Gatsby surround is produced from solid air-dried European Oak, cut from the heart of the log and features natural knots, splits and shakes.

	METRIC	IMPERIAL
Mantel	1371	54
Mantel Depth	140	5½
Surround Height	1104	43½
Opening Height	915	36
Opening Width	915	36
Width at Base	1270	50
Rebate	0	0



The Gatsby and Bentley are supplied in three pieces. Metal keyhole plates are inserted in the backs of the legs and mantel.

## Bentley



Bentley: Extremely Aged Oak in a Medium Finish

	METRIC	IMPERIAL
Mantel	1320	52
Mantel Depth	70	2¾
Surround Height	1105	43½
Opening Height	915	36
Opening Width	915	36
Width at Base	1270	50
Rebate	0	0

### SPECIAL SIZES?

No Problem! Most of the surrounds in this brochure can be made to measure.







Cropton: Rich Oak

## Cropton

	METRIC	IMPERIAL
Mantel	1422	56
Mantel Depth	228	9
Surround Height	1187	46 <sup>3</sup> / <sub>4</sub>
Opening Height	915	36
Opening Width	915	36
Width at Base	1257	49 <sup>1</sup> / <sub>2</sub>
Rebate	28	1 <sup>1</sup> / <sub>8</sub>
Removable To	76	3

## Solid Oak Stove Surrounds

	METRIC	IMPERIAL
Mantel	1397	55
Mantel Depth	197	7 <sup>3</sup> / <sub>4</sub>
Surround Height	1150	45 <sup>1</sup> / <sub>4</sub>
Opening Height	915	36
Opening Width	915	36
Width at Base	1258	49 <sup>1</sup> / <sub>2</sub>
Rebate	28	1 <sup>1</sup> / <sub>8</sub>
Removable To	76	3

## Gainsborough

Gainsborough: Golden Oak







Sutton with matching Mirror and Hollow Beam Side Table  
Aged Oak in a Medium/Dark Finish

	METRIC	IMPERIAL
Mantel	1220	48
Mantel Depth	135	5 <sup>3</sup> / <sub>8</sub>
Surround Height	1080	42 <sup>1</sup> / <sub>2</sub>
Opening Height	889	35
Opening Width	889	35
Width at Base	1220	48
Rebate	0	0

## Sutton

## Barkston

	METRIC	IMPERIAL
Mantel	1320	52
Mantel Depth	127	5
Surround Height	1085	42 <sup>3</sup> / <sub>4</sub>
Opening Height	915	36
Opening Width	915	36
Width at Base	1168	46
Rebate	0	0



Barkston: Extremely Aged Oak in a Light/Medium Finish





Leicester: Soft Cream Finish

## Leicester

	METRIC	IMPERIAL
Mantel	1270	50
Mantel Depth	110	4¼
Surround Height	1130	44½
Opening Height	915	36
Opening Width	889	35
Width at Base	1182	46½
Rebate	0	0

Two attractive surrounds that can be made to match the size of your fireplace opening.

## Painted Stove Surrounds

	METRIC	IMPERIAL
Mantel	1320	52
Mantel Depth	127	5
Surround Height	1150	45¾
Opening Height	915	36
Opening Width	889	35
Width at Base	1220	48
Rebate	0	0

## Lichfield

Lichfield: Antique White Finish





# Beam Covers

Create a superb ambience in your room with our authentic timber beams.

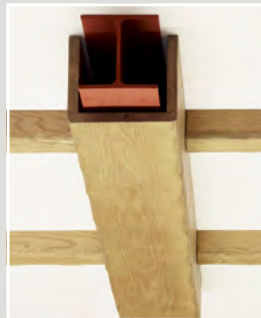
They are ideal where a steel beam needs to be covered as they can be made to almost any length and dimension and finished to match your fireplace.

Wall and ceiling spars and dado rails further enhance the overall effect.

The room set features a Beam Cover and Spars in Rustic Oak in a Light/Medium Finish with a Beamish Surround, Beamish Mirror and a Hollow Beam Side Table to match.



Steel Beam Cover: Prime Oak in a Natural Waxed Finish



- A. Steel Beam Cover and Spars:  
Rustic Oak in a Light/Medium Finish
- B. Beamish Surround:  
Rustic Oak in a Light/Medium Finish
- C. Beamish Mirror:  
Rustic Oak in a Light/Medium Finish
- D. Hollow Beam Side Table:  
Rustic Oak in a Light/Medium Finish
- E. Justine Bookcase: Waxed Oak

Steel Beam Cover, with Spars and Corbels: Medium Finish





# Complete the look with furniture to match your Beam

## Furniture

What could be more ideal than choosing some occasional furniture that matches your fireplace or beam?

All the pieces can be made to your individual requirements.



1. TV Unit with Log Store: Rustic Oak in a Light/Medium Finish



4. Log Cabinet: Steel Grey with Light Oak



6. Bookcase: Aged Oak in a Medium/Dark Finish

(MM)	WIDTH	DEPTH	HEIGHT
1.	1220	355	610
2.	1000	500	450
3.	970	470	450
4.	410	285	1080
5.	495	495	450
6.	810	305	1225
7.	1000	370	455
8.	600	540	455
9.	400	350	360



2. Coffee Table: Aged Oak in a Medium Finish



8. Hollow Beam Side Table: Rustic Oak in a Medium Finish



3. TV Unit: Prime Oak in a Natural Waxed Finish



5. Side Table: Aged Oak in a Medium Finish



7. Hairpin Leg Coffee Table: Solid Oak Oiled



9. Log Box: Oak in a Light/Medium Finish

# Timber Beams and Shelves Dimensions and Finishes

		Dimensions (Imperial in Black, Metric in Red)			Timber and Finishes										
Page	Oak Beams	Length	Front Size	Top Size	Prime Oak	Rustic Oak & Round Edge	Dressed Oak	Aged Oak	Extremely Aged Oak	Ancient Oak	Waxed Pine	Painted	Veneered		
14	Deep Beam	<i>Any length up to 3m</i>	5½ 140	5½ 140		●	●	●	●	●					
15	Great Beam	<i>Any length up to 3m</i>	7½ 190	5½ 140		●	●	●	●	●					
16	Large Fascia Beam	<i>Any length up to 3m</i>	7½ 190	2¾ 70	●	●	●	●	●	●					
16	Standard Fascia Beam	<i>Any length up to 3m</i>	5½ 140	2¾ 70	●	●	●	●	●	●					
17	Mini Fascia Beam	<i>Any length up to 3m</i>	3¾ 95	2¾ 70	●	●	●	●	●	●					
17	Fascia Panel	<i>Any length up to 3m</i>	7 178	1¼ 30	●	●		●							
17	Hollow Deep Beam	<i>Any length up to 3m</i>	5½ 140	5½ 140	●	●		●							
17	Hollow Beam	<i>Any length up to 3m</i>	7 178	4 102	●	●		●							
17	Large Hollow Beam	<i>Any length up to 3m</i>	9 228	7 178	●	●		●							
Page	Oak Beams with Corbels	Mantel Size	Overall Height	Width between Corbels											
--	Great Beam with Corbels	<i>Any length up to 3m</i>	18 457	<i>Adjustable</i>		●	●	●	●	●					
14	Deep Beam with Corbels	<i>Any length up to 3m</i>	16 406	<i>Adjustable</i>		●	●	●	●	●					
16	Std Fascia Beam with Corbels	<i>Any length up to 3m</i>	16 406	<i>Adjustable</i>	●	●	●	●	●						
Page	Oak Floating Shelves	Length	Front Size	Top Size											
18	Great Shelf	<i>Any length up to 3m</i>	5½ 140	7½ 190		●	●	●	●	●					
18	Large Shelf	<i>Any length up to 3m</i>	2¾ 70	7½ 190	●	●	●	●	●						
18	Standard Shelf	<i>Any length up to 3m</i>	2¾ 70	5½ 140	●	●	●	●	●						
18	Hollow Shelf	<i>Any length up to 3m</i>	4 102	7 178	●	●		●							
Page	Shelves	Mantel Size	Overall Height	Width between Corbels											
18	Shelf with Corbels	<i>Any length up to 3m</i>	13¼ 336	<i>Adjustable</i>		●	●	●	●						
18	Plain Corbel Shelf	51 x 7 1295 x 178	11 280	38 965	●						●	●			
18	Corby Shelf	51 x 7 1295 x 178	11 280	38 965	<i>Available in a wide combination of finishes.</i>										
Page	Contemporary Shelves	Length	Front Size	Top Size											
19	Canterbury Shelf	47¼ 1200	3½ 89	5½ 140	●							●			
19	Mallaig Shelf	47¼ 1200	4¼ 108	5½ 140	●										
19	Large Shelf	<i>Any length up to 2.4m</i>	2¾ 70	7½ 190								●	●		
19	Standard Shelf	<i>Any length up to 2.4m</i>	2¾ 70	5½ 140								●	●		
19	Alcove Shelf	<i>Any length up to 2.4m</i>	2¾ 70	<i>Any size</i>	●							●	●		
Page	Accessories	Height	Width												
23	Beam Mirror	31½ 800	41½ 1053	<i>Not Applicable</i>	●	●		●	●						
20	Beamish Mirror	28¾ 730	46 1168	<i>Not Applicable</i>		●	●	●	●						

Great Beams and Deep Beams in 'Rustic', 'Dressed', 'Aged', 'Extremely Aged' and 'Ancient' textures are produced from solid, air-dried European Oak; cut from the heart of the log. They feature natural knots, splits and shakes.

Fascia Beams and Panels and Shelves are produced from kiln-dried European Oak and also may feature some natural knots, splits and shakes.

Hollow Beams and Shelves and also Steel Beam Covers are fabricated from 21mm kiln-dried oak. Thus they can be made to any size and are much lighter in weight than a corresponding solid beam. Other beams, surrounds and shelves in the brochure are manufactured from first quality kiln-dried timber.

Timber being a natural product, is subject to a degree of movement under extreme conditions. Whilst we would expect very few problems we cannot guarantee its performance. Painted shelves and surrounds are manufactured from high quality MDF.

**We offer a made-to-measure service on most of the products within this brochure. Beams can be cut to any length up to 3 metres.**

With thanks to **Gazco Stovax** for permission to use their images.





## We love a challenge!

Customers frequently ask for variations from our wide range of products.

We're always keen to oblige.

- *FocusCast Vintage*  
Non-combustible beam  
finished in Honey Oak
- *FocusCast Non-combustible*  
Beams, realistic timber effect
- *Log Cabinets in Oak and*  
Painted Finishes
- *FocusCast York*  
Non-combustible beam  
finished in Burnt Oak



**MADE IN BRITAIN**



**FOCUS**  
FIREPLACES

**Focus Fireplaces Limited**

Unit 27, The Bull Commercial Centre,  
Stockton-on-Forest, York YO32 9LE.

Tel: 01904 400109, 01904 400545

email: [sales@focusfireplaces.co.uk](mailto:sales@focusfireplaces.co.uk)

[www.focusfireplaces.co.uk](http://www.focusfireplaces.co.uk)

*These products are continually updated and improved. We reserve the right to alter designs, dimensions and specifications of product without notice.*

*All sizes are approximate. Brochure colours may vary from the actual product due to printing processes and the variations in finishing.*

© Focus Fireplaces Manufacturing 2023